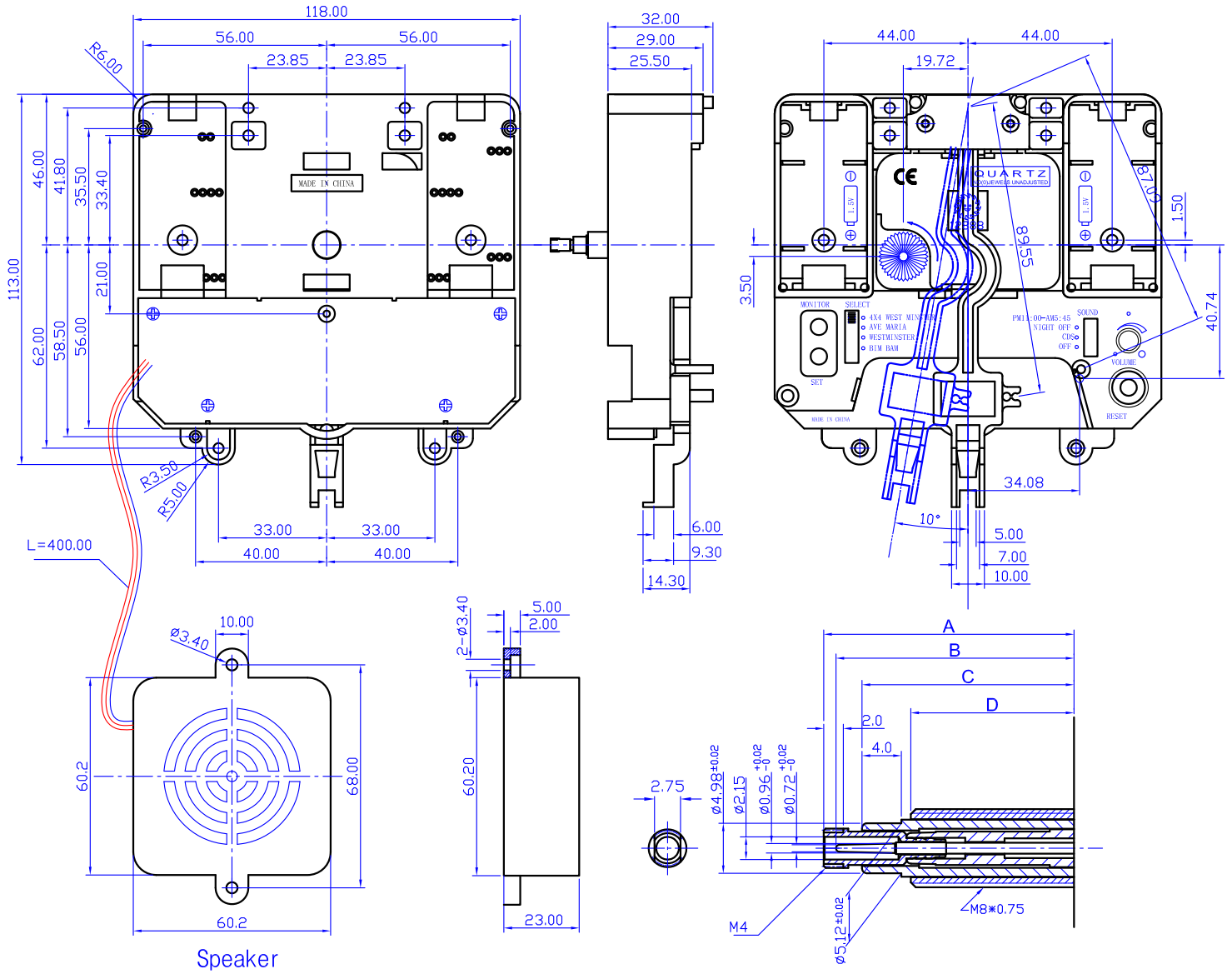


# 12888D5M WESTMINSTER CHIME PENDULUM MOVEMENT



DIMENSION: 118Wx113Hx32D

\*UNIT : m/m

TYPE	Shaft Length				Description
	A	B	C	D	
12888D5MC5	18.0	17.1	14.5	10.0	"I" SHAFT Max. Pendulum Swing : 20° Max. Pendulum Length : 42cm Max. Pendulum Weight : 100g 4X4 Westminster/Ave Maria/Westminster/Bim Bam Hourly Strikes Following With Chime Volume Control; Night Silent from 11:PM ~ 05:45AM
12888D5MC	21.5	20.7	18.0	14.0	
12888D5MC7	26.4	25.5	22.5	17.5	

A=Min.(Min Hand Nut) B=Sec. C=Hour. D=Screw

## SPECIFICATIONS

OPERATING VOLTAGE	2.3V ~ 3.2V
BATTERY	2 pcs UM-2 (C)
TIME KEEPING ACCURACY	± 30SEC/MONTH 25°C (UNADJUSTED)
TORQUE AT SECOND HAND	≤ 0.6(GF-CM)
TORQUE AT MINUTE HAND	≤ 45 (GF-CM)
OPERATING TEMPERATURE RANGE	-10°C ~ 60°C