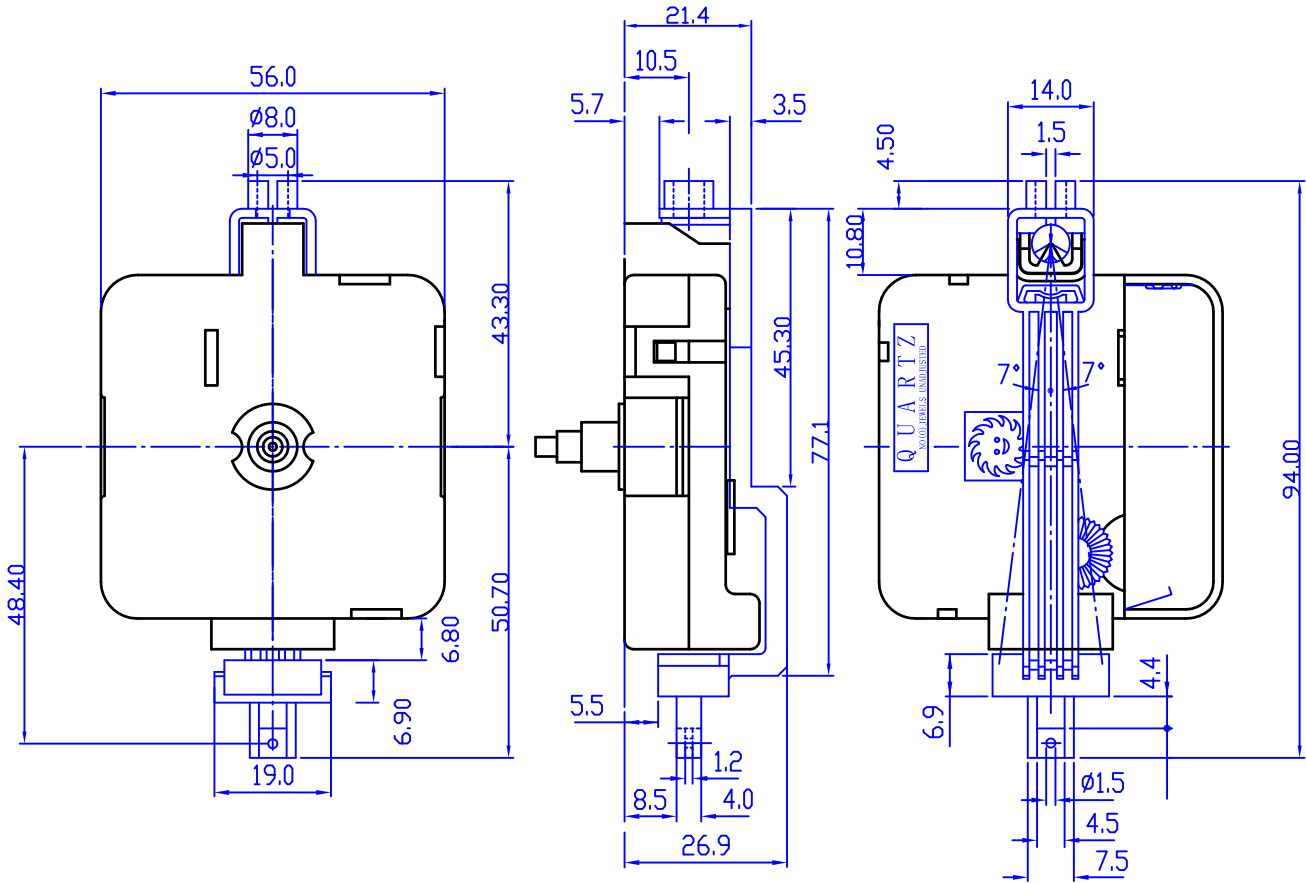


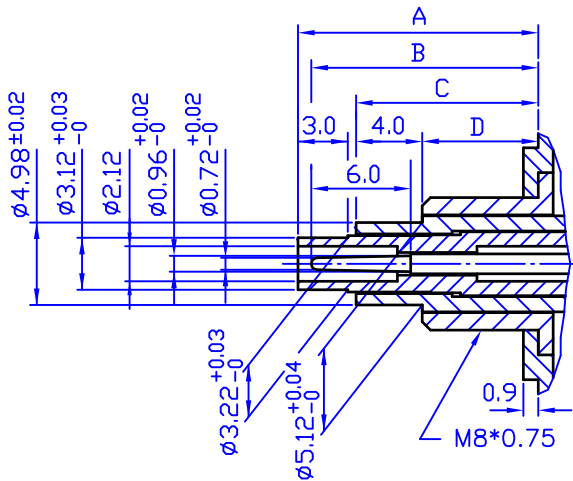
12888DM3 MINI PENDULUM MOVEMENT



*UNIT :m/m

TYPE	SPEC	A	B	C	D	DESCRIPTION
12888DM3		14.5	13.7	11.0	7.0	DOUBLE PENDULUM
12888DM3A		8.6	7.8	5.6	—	WITHOUT THREAD SHAFT
12888DM3E		14.5	13.7	11.0	7.0	TRIGGER PENDULUM

MAXIMUM PENDULUM LENGTH : 30 cm ,
 MAXIMUM PENDULUM WEIGHT : 40 g ,
 MAXIMUM PENDULUM SWING : 14°



SPECIFICATIONS

OPERATING VOLTAGE	1.3V~1.7V
TIME KEEPING ACCURACY	±30SEC/MONTH AT 1.5V DC. 25° (UNADJUSTED)
BATTERY LIFE	APPROX. 8 MONTHS (UM-3)
TORQUE AT SECOND HAND	LESS THAN 0.6 (GF-CM)
TORQUE AT MINUTE HAND	LESS THAN 36 (GF-CM)
OPERATING TEMPERATURE RANGE	-10°C~+60°C
CURRENT CONSUMPTION	LESS THAN 250µA ~270µA AT 1.5V DC. (PENDULUM)