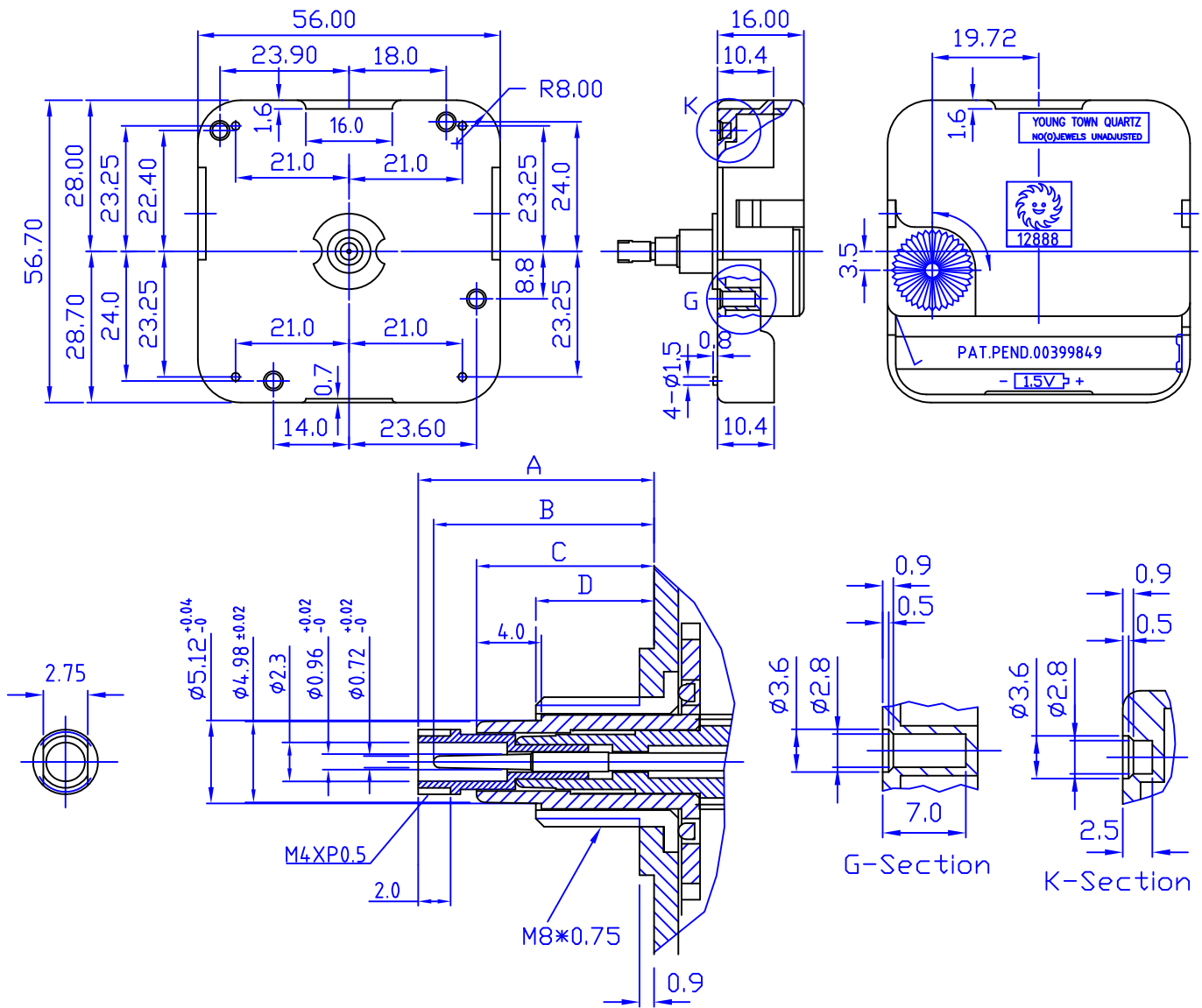


MINUTE HIGH TORQUE MOVEMENT " I " SHAFT



*UNIT:m/m

TYPE \ NO.	A	B	C	D	DESCRIPTION
12888SM	14.5	13.7	11.0	7.0	High Torque Minute
12888SM0	18.4	19.1	11.0	7.0	BATTERY : UM-3
12888SMC	23.5	22.7	20.0	16.0	BATTERY : UM-3
12888SMC1	17.0	16.2	13.5	9.5	BATTERY : UM-3
12888SMW	14.5	13.7	11.0	7.0	High Torque Minute,Second Fit up Second hand is necessary.

SPECIFICATIONS

OPERATING VOLTAGE	1.3V ~1.7V
TIME KEEPING ACCURACY	±30SEC/MONTH AT 1.5V DC. 25°C (UNADJUSTED)
CURRENT CONSUMPTION	LESS THAN 150 μA AT 1.5V DC.
TORQUE AT SECOND HAND	0.6(GF-CM)
TORQUE AT MINUTE HAND	UNDER 45(GF-CM)
OPERATING TEMPERATURE RANGE	-10°C ~ 60°C