
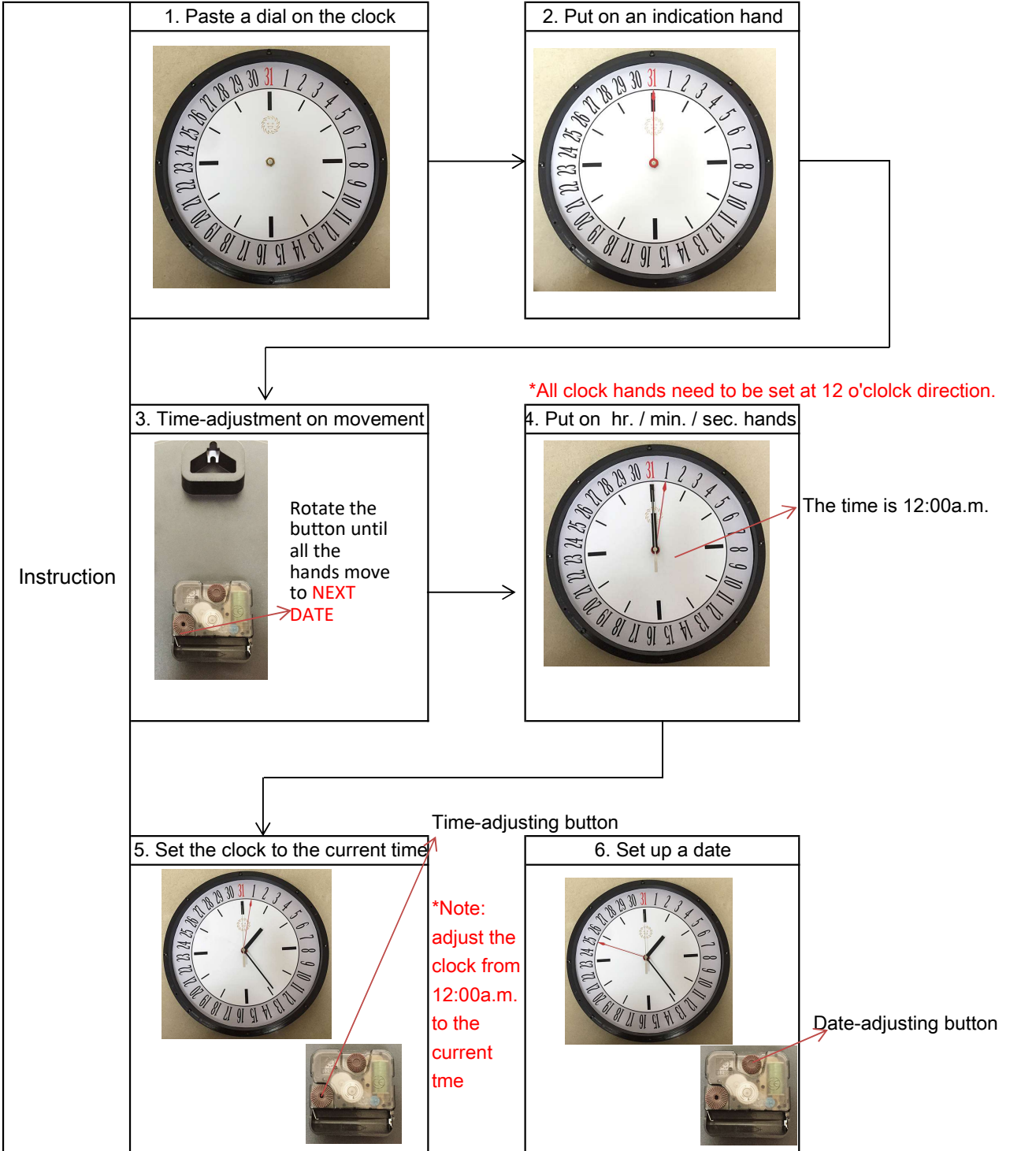


# SD 31-day / Date Indication Movement - Basic Cognition and Instruction Manual

Features	Four clock hands in total - Hour hand, Minute hand, Second hand, Date indication hand
	The fourth hand runs to next small interval every 24 hours. Date 28/ 29/ 30 need to be adjusted by hand.
	The fourth hand gradually moves to next date in the revolution from 11:00p.m. to 12:00a.m..
Illustration	 <p>*The indication hand moves to next date at 12:00a.m..</p>



Step 1-4 - The assembly steps that clock manufacturers need to know Step 5-6 - Key notes on the instruction

\* Manual instruction for factory workers to assemble products correctly

\* Demonstration for clients on how to do time adjustments on a date-display clock.